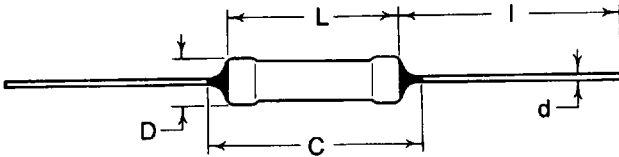


LEADED GENERAL PURPOSE

- Type Z are conformal coated, Type J are molded
- Type Z are tan color, single black band identifier
Type J are black, no marking
- Suitable for automatic machine insertion
- Size compatible with 1/8, 1/4 & 1/2 watt resistors



STANDARD APPLICATIONS & DIMENSIONS

TYPE	MAX AMP	L (Reference)	C (Maximum)	D	d	l
Z - 12	1.5	$\frac{0.146}{3.7}$	$\frac{0.162}{4.12}$	$\frac{0.063 \pm 0.008}{1.6 \pm 0.2}$	$\frac{0.016 \pm 0.002}{0.40 \pm 0.05}$	$\frac{1.18 \pm 0.12}{30.0 \pm 3.0}$
Z - 16		$\frac{0.126}{3.2}$	$\frac{0.177}{4.5}$	$\frac{0.067 \pm 0.008}{1.7 \pm 0.2}$	$\frac{0.018 \pm 0.002}{0.45 \pm 0.05}$	
Z - 25	2.5	$\frac{0.256}{6.5}$	$\frac{0.280}{7.1}$	$\frac{0.091 \pm 0.008}{2.3 \pm 0.2}$	$\frac{0.024 \pm 0.002}{0.60 \pm 0.05}$	
Z - 25Y	15.0	$\frac{0.228}{5.8}$	$\frac{0.280}{7.1}$	$\frac{0.087 \pm 0.004}{2.2 \pm 0.10}$		
Z - 33	3.0	$\frac{0.335}{8.51}$	$\frac{0.365}{9.27}$	$\frac{0.118 \pm 0.012}{3.0 \pm 0.3}$		
J - 1/6	10.0	$\frac{0.134}{3.4}$	$\frac{0.138}{3.5}$	$\frac{0.067 \pm 0.008}{1.7 \pm 0.2}$	$\frac{0.020 \pm 0.002}{0.50 \pm 0.05}$	
J - 1/4	15.0	$\frac{0.256}{6.5}$	$\frac{0.276}{7.0}$	$\frac{0.085 \pm 0.006}{2.15 \pm 0.15}$	$\frac{0.024 \pm 0.002}{0.60 \pm 0.05}$	

Resistance 0.02Ω max.
 Operating Temperature Range -55°C + 155°C
 Rated Ambient Temperature 70°C
 Dielectric Strength - 450V AC, minimum
 Insulation resistance - 100M ohm, minimum

ORDERING AND SPECIFYING INFORMATION

